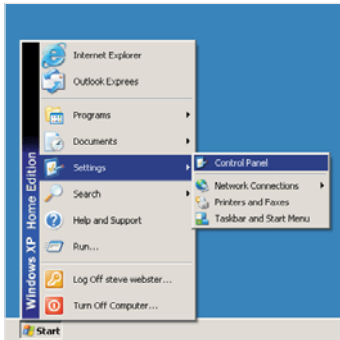


# How to install your signature Font

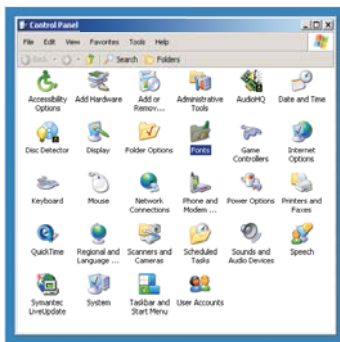
Signature Fonts are easy to install and are compatible in Windows 95, 98, ME, NT 4.0, 2000, and XP. To Install your font, follow the simple instructions below.

Before you begin installation, make sure you close any applications you have open.



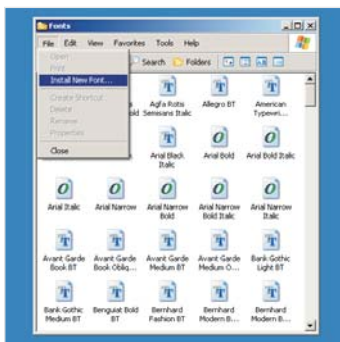
## 01 | OPEN CONTROL PANEL

Click on the Start button, and move over Settings. From the submenu, select Control Panel



## 02 | OPEN FONTS FOLDER

When the Control Panel opens, double click on the Fonts Folder icon



## 03 | SELECT 'INSTALL NEW FONT'

In the Fonts Folder click on the File menu and from the dropdown list select 'Install New Font'



## 04 | SELECT YOUR FONT

In the new window, select the drive and folder that contains your font. Then click on your TrueType Signature font in the top half of the window and select OK

Installation is now complete and your Signature Font is ready to use for the first time.

N.B. These instructions may vary slightly between different operating systems, if you encounter any problems consult your operating systems documentation and follow its instructions to install fonts.